

1850SJ

ULTRA SERIES BOOM LIFT

JLG
reachingout®

Performance

| | | |
|--------------------------------|-----------------|-------------------------|
| Platform Height | 185 ft 7 in. | 56.56 m |
| Horizontal Outreach | 80 ft | 24.38 m |
| Below Ground Reach | 4 ft 10 in. | 1.47 m |
| Swing | 360° Continuous | |
| Platform Capacity-Restricted | 1,000 lb | 454 kg |
| Platform Capacity-Unrestricted | 500 lb | 227 kg |
| Platform Rotator | 173° Hydraulic | |
| Jib Length | | |
| Retracted | 13 ft | 3.96 m |
| Extended | 20 ft | 6.1 m |
| Jib Range of Articulation | 120° (+75, -45) | |
| Weight ¹ | 59,900 lb | 27,170 kg |
| Max. Ground Bearing Pressure | 119.6 psi | 8.41 kg/cm ² |
| Drive Speed | 2.8 mph | 4.5 km/h |
| Gradeability | 40% | |
| Turning Radius (Inside) | | |
| Axles Retracted | 23 ft 4 in. | 7.12 m |
| Axles Extended | 7 ft 7 in. | 2.3 m |
| Turning Radius (Outside) | | |
| Axles Retracted | 31 ft 3 in. | 9.52 m |
| Axles Extended | 21 ft 8 in. | 6.6 m |

1. Certain options or country standards increase weight.

Standard Specifications

Power Source

| | | |
|------------------------------|----------|---------|
| Diesel Engine | | |
| Deutz TCD 3.6L Tier IV Final | 99.8 hp | 74.4 kW |
| Fuel Tank Capacity | 52.8 gal | 200 L |

Hydraulic System

| | | |
|---------------------------|----------|---------|
| • Hydraulic Tank Capacity | 75.1 gal | 284.2 L |
|---------------------------|----------|---------|

Tires

| | |
|------------|------------------------|
| • Standard | 445/50D710 Foam-filled |
|------------|------------------------|

Standard Features

- Platform 36 x 96 in. (.91 x 2.44 m) Side Entry
- Selectable Capacity Envelope
- Drive-Out Extendable Axles
- 173° Hydraulic Platform Rotator
- AC Receptacle in Platform
- Tilt Light and Alarm
- Swing-Out Engine Tray
- 12V-DC Auxiliary Power
- Hourmeter
- Control ADE® System
- Full-Time 4WD
- 3 Selectable Steering Modes
- Proportional Controls
- Gull-Wing Steel Hoods
- 445/50D710 Foam-filled Rim Protector Lug Tread Tires
- Platform Console Machine Status Light Panel*
- Lifting/Tie Down Lugs
- Engine Distress Warning/Shutdown—Selectable via JLG Analyzer
- All Motion Alarm
- Glow Plugs
- LCD Panel at Operator's Platform Control Console

* Provides indicator lights at platform control console for system distress, fuel level, low fuel, 5 degree tilt light and foot switch status.



- **Heightened Productivity**—The 1850SJ is much faster to full height, so operators can spend more time working and less time positioning the boom. The axles take approximately one minute to extend or retract. They're able to pivot in and out and do not telescope like extendable axles on other Ultra Series boom lifts.
- **Greater Work Envelope**—Telescoping jib and five section boom provides over 2.9 million cubic feet of work area and greater ability to reach up and over. An LCD screen shows operators where they are in the work envelope along with other useful information.
- **More Capacity**—Featuring dual 1,000 lb/500 lb, the 1850SJ is the most powerful boom in the industry. Plus, the operator can move just the jib, rather than the whole boom, for greater maneuverability and more precise positioning.
- **Ease of Transport**—No oversized load permit needed (over weight permit is required for highway transportation).

Accessories & Options

- 36 x 72 in. (.91 x 1.83 m) Platform
- Inward Self-Closing Swing Gate
- Fall Arrest Platform 36 x 96 in. (.91 x 2.44 m) Rear Entry⁵
- Mesh to Top Rail-Bolt-on Aluminum 6 ft⁵
- Mesh to Top Rail-Bolt-on Aluminum 8 ft⁵
- Light Package¹
- Soft Touch System
- Cold Weather Start Kit²
- Hostile Environment Kit³
- Flashing Amber Beacon
- Cold Package Plus⁴
- Tool Tray
- Special Hydraulic Oils
- Accessory Packages:
 - SkyWelder® Package
 - Nite Bright® Package
 - SkyPower® Package
 - SkyGlazier®
 - SkyCutter®
 - Pipe Rack

1. Includes platform mounted worklights and drive/backup lights.

2. Includes battery heater and oil tank heater.

3. Includes console cover, boom wipers and cylinder bellows.

4. Includes extreme cold engine oil, fuel conditioner, engine block heater, battery blanket, glow plugs, hydraulic tank heater, and oversized footswitch. Arctic hydraulic oil priced separately.

5. Not available in all markets.

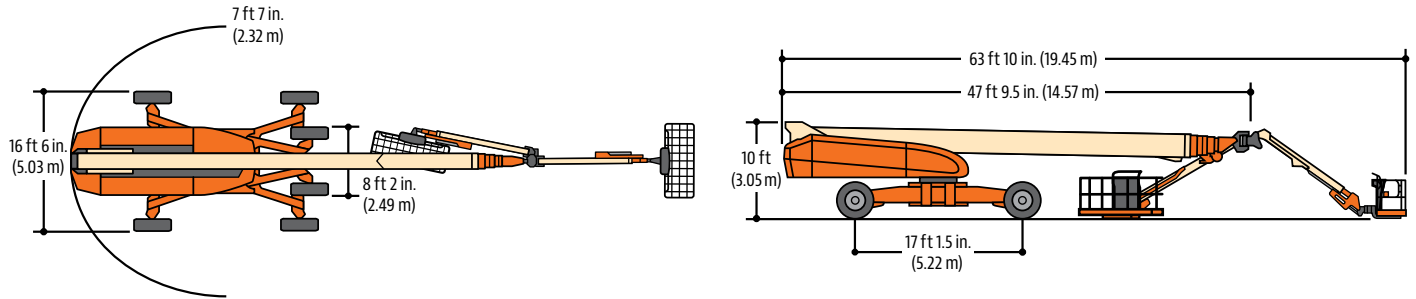
1850SJ

ULTRA SERIES BOOM LIFT



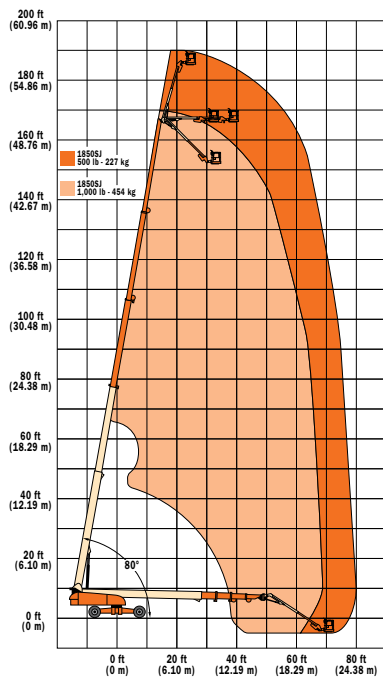
Dimensions

All dimensions are approximate.



Reach Diagram

1850SJ



The JLG "1 & 5" Warranty

We provide coverage for one (1) full year, and cover all specified major structural components for five (5) years. Due to continuous product improvements, we reserve the right to make specification and/or equipment changes without prior notification. This machine meets or exceeds applicable ANSI and CSA requirements based on machine configuration as originally manufactured for intended applications. Please reference the serial number plate on the machine for additional information.

Part No.: 3131030
R031805
Printed in USA



JLG Industries, Inc.
1 JLG Drive
McConnellsburg, PA 17233-9533
Telephone 717-485-5161
Toll-free in US 877-JLG-LIFT
Fax 717-485-6417
www.jlg.com

An Oshkosh Corporation Company